



**High performance precast  
concrete elements**

**CONSOLIS**

**ASA**



# About us

---

ASA CONS ROMANIA is the first privately-owned precast concrete plant in Romania. We are the **leader in precast reinforced concrete solutions** for residential and non-residential constructions in the local market.

For the past 25 years, we have been building commercial and logistics centers, warehouses, manufacturing facilities, infrastructure works, industrial and civil constructions.

ASA CONS is part of the CONSOLIS Group - **European leader** in the design and manufacturing of high-performance concrete structures.

With more than 100 years of experience, the CONSOLIS Group has become synonymous with innovative, state-of-the-art solutions.

Thus, ASA CONS has access to cutting-edge technologies and an infusion of know-how from the best **specialists in the field**.



ASA CONS manufactures the **complete range of reinforced and prestressed concrete** elements and offers full services required for the erection of a structure.

Since 1999, we took on construction projects such as:

- Industrial buildings
- Civil construction
- Infrastructure-type projects

A **complete solutions partner** – from design to execution, transport, assembly and general contracting.

---

**1.000+**  
projects  
completed

---

---

**6.000.000+**  
sqm built

---

---

**600.000+**  
cbm manufactured and installed  
prefabricated elements

---

---

**190+**  
employees

---

Well-built  
for well-being

**CONSOLIS**

**ASA**



# Building a sustainable world, element by element

---

Since 2008, ASA CONS ROMANIA has been a member of the CONSOLIS Group.

Consolis is the **European leader in precast concrete solutions**, providing high-performance sustainable solutions for the construction and utilities sector. Together with our clients, we create beautiful buildings and the infrastructure needed to serve local communities for centuries to come.

We believe in responsible industry leadership and are committed to driving the sustainable transformation of our industry. **Our short-term emission reduction targets have been approved by the Science Based Targets initiative.**

Consolis has over 7,500 employees in 17 markets worldwide. The Group generated sales of 1 billion EUROS in 2023, while delivering on its strategic mandate:

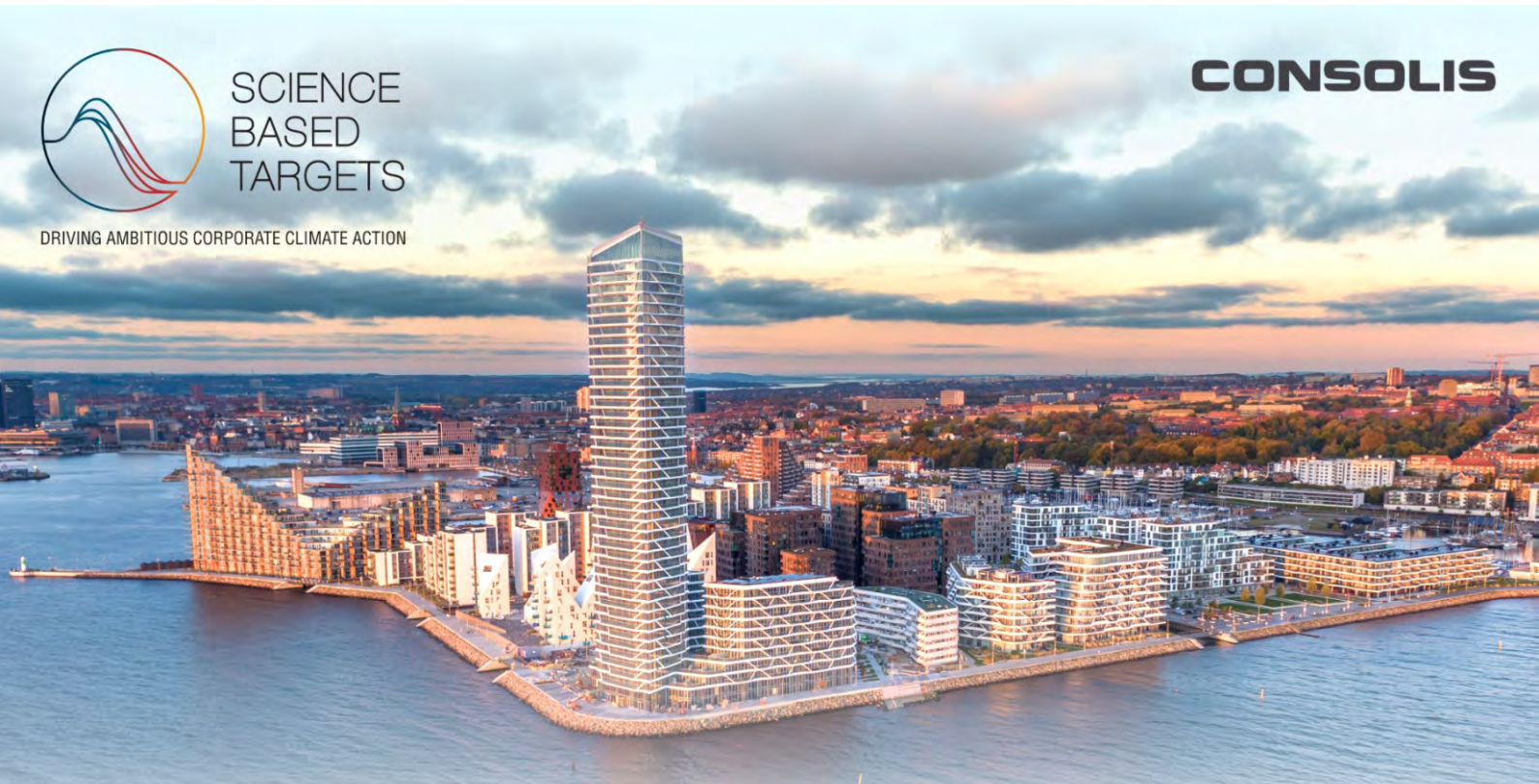
- We offer the best products and services in the markets where we operate
- We are committed to reducing CO<sub>2</sub> emissions from our factories and operations
- We work towards leading the sustainable transformations of our industry towards a Zero-Net future for precast concrete



SCIENCE  
BASED  
TARGETS

DRIVING AMBITIOUS CORPORATE CLIMATE ACTION

**CONSOLIS**



Our near-term emissions reduction targets have been approved by SBTi.

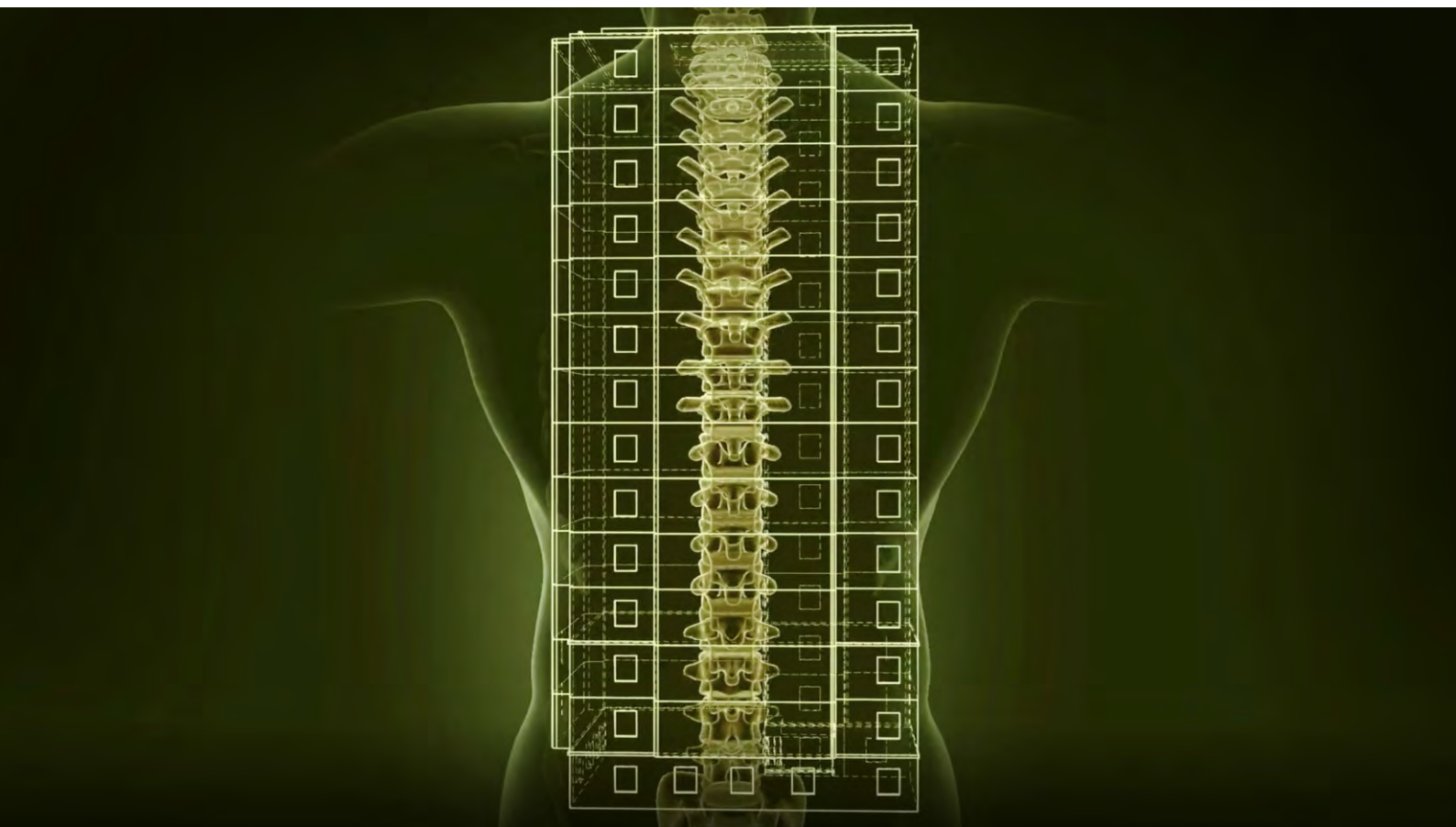
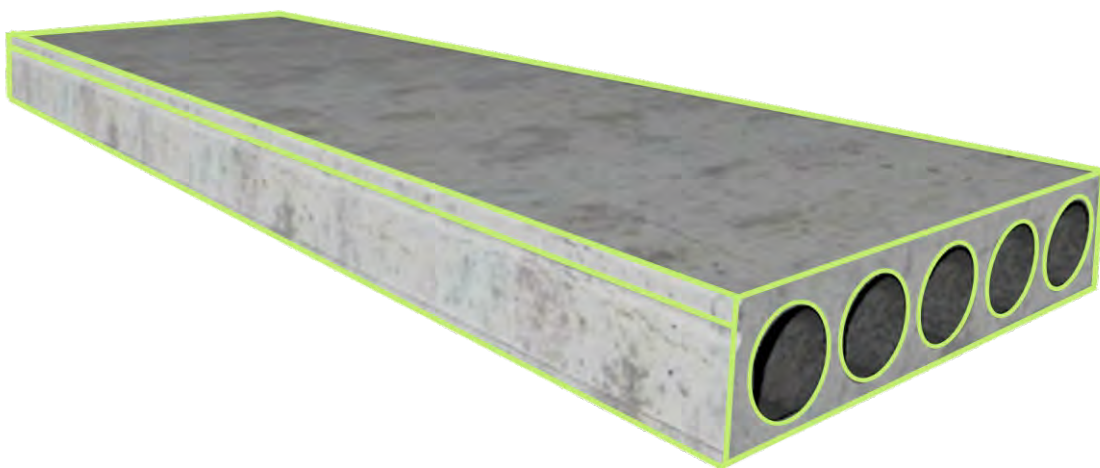


# Products & Solutions

## Green Spine Line®

**Green Spine Line®** is a Consolis-trademarked product innovation that proves the Group's orientation towards sustainable construction. This solution uses precast concrete with low CO<sub>2</sub> emissions as a competitive advantage.

The Consolis certified sustainable product line includes: hollow-core slabs, façade panels, beams, pillars and structural elements.






# Complete solutions for sustainable construction

---

ASA CONS manufactures the full range of elements made of reinforced and prestressed concrete, as well as the services related to the erection of a structure, from shopping centers and logistics to industrial and infrastructure projects.







The vast portfolio of ASA CONS is proof of the quality and professionalism of the entire team: designers, factory personnel, authorized lab technicians, transportation and assembly teams on construction sites throughout the country, as well as in Hungary and in the Republic of Moldova.

**1.000.000+ sqm**

built for Dedeman

**16+ years**

relationship with Takenaka-Makita

**80,000 sqm built in  
3 months**

for Yildiz Entegre

**6 production facilities**

for Emerson Romania

**CONSOLIS**

**ASA**

# Benefits of precast concrete

---

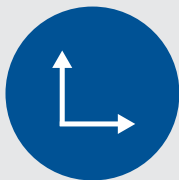
One-stop-shop for your project:  
Design, Manufacturing, Transport, Assembly



**Reduced production and assembly time, regardless of weather conditions**



**Competitive cost for production and assembly**



**Wide selection of shapes and sizes**



**Superior product quality due to a rigorous quality assurance program**



**CONSOLIS**

**ASA**

ASA CONS is a complete partner, a supplier of quality products and services adapted to the specifics of each project.

The final warranty of the project and the reduced time from design to execution are just two of the main benefits to our customers.



**The prefabricated products are delivered to the construction site with certificates of conformity**



**They provide thermal, water and fire protection**



**Prefabricated products are durable; their strength gradually increases over time**



**Better use of the built space due to the load-bearing capabilities of the prefabricated elements**

# ASA CONS References

---

## SHOPPING CENTERS



### DEDEMAN

54 stores  
Total area 750,000 sqm



### METRO

19 stores  
Total area 250,000 sqm



### KAUFLAND

30 stores  
Total area 240,000 sqm



### NEPI SHOPPING CENTERS

4 shopping centers  
Total area 150,000 sqm

See more references:





**CONSOLIS**

**ASA**

## **LOGISTIC HUBS**



### **WDP - WAREHOUSE DE PAUW**

11 logistic hubs  
Total area 240,000 sqm



### **CTP - CTPARK**

13 logistic hubs  
Total area 270,000 sqm



### **DEDEMAN LOGISTICS**

7 logistic hubs  
Total area 300,000 sqm



### **VGP - PARK**

5 logistic hubs  
Total area 80,000 sqm

---

## MANUFACTURING FACILITIES



### UAC BAIA MARE – UNIVERSAL ALLOY CORPORATION

Built area: 80,000 sqm

Project details: 22,000 sqm RF panels (fire resistant walls)



### MAKITA BUCHAREST

Built area: 100,000 sqm

Project details: components over 60t and oversized transport management for 450 km



### NOKIAN TYRES ORADEA

Built area: 54,000 sqm

Project details: production building and mixed-use multi-store building



### STIHL ORADEA

Built area: 25,000 sqm

Project details: RF panels (fire resistant walls)



See more references:



**CONSOLIS**

**ASA**

## **PUBLIC BUILDINGS**



### **ARENA SEPSI OSK**

Capacity: 8,000 seats

Project details: Perimeter stands + VIP area



### **ROGERIUS MARKET ORADEA**

Project details: Prefabricated floors, green roof



### **OTOPENI OLYMPIC POOL**

Capacity: 2,797 seats

Project details: 1 Olympic Swimming Pool, 1 Olympic Jumping Pool, 4 Training Pools and Seismic Connection using NMB Splice Sleeve products



### **SPA ZALAU**

Levels: S + P + 2E

Developed area: 4,000 sqm

**CONSOLIS**

**ASA**

## RESIDENTIAL BUILDINGS



### BACIU RESIDENTIAL COMPLEX - CLUJ

Project details: Levels 2S + P + 3E  
Developed area: 9,000 sqm



### PREFABRICATED HOUSE - ORADEA

Project details: Levels S+P  
Developed area: 280 sqm

## INFRASTRUCTURE



### ORADEA RING ROAD

Project details: T bridge beams – 24 m



### TRANSYLVANIA HIGHWAY

Project details: T bridge beams – 24 m



See more references:



**CONSOLIS**

**ASA**





Well-built  
for well-being

Asa Cons Romania  
22 Decembrie 1989 Street, No. 27  
401113 Turda, Cluj  
Tel.: +40264312765  
Mobile: +40 743 053 167  
[www.asacons.ro](http://www.asacons.ro)

**CONSOLIS**

**ASA**

